

## 6、Precaution

If a large deviation between the measurement result and the expectation is found:

- Please pay attention to check whether the input impedance of the oscilloscope is set to 50Ω.
- Try to press the Cali. key for calibration (no need to disconnect the test connection).
- When measuring, the MCX or MMCX adapter should be used to solder directly to the test point as much as possible, and no leads should be used; otherwise, it will have a great impact on the test result.

### Over-voltage Warning:

When “Gain” button flashes and hearing a rapid "DiDiDiDi.." buzzer sound, indicate a over-voltage warning, please select a suitable attenuating tip.

### Over-heating Warning:

When hearing a “DiDi” sound every 2 seconds, it means the temperature of the Optical-Electrical (O-E) converter is overheated, please check whether the dissipation port is blocked.

## 7、Warranty

Optical-fiber Isolated Probe main body warranty for 1 year (extendable with extra charge).

The SigOFIT probe contains high-quality components and should be treated with care, **Damage to the fiber optic cable is NOT covered by the warranty.**

Standard accessories are NOT covered in main body warranty.

Micsig provides one-on-one exclusive technical support service.

During the warranty period, Micsig will be responsible for providing free maintenance for any malfunctions caused by quality issues within the normal use of the product that have not been disassembled or repaired.

The warranty will be invalid in the following cases, but repair services can be provided, free of labor costs, and only parts fees will be charged:

- Any damage to accessories caused by improper use, maintenance, or storage by consumers.
- Damage caused by force majeure factors, such as natural disasters.

Micsig will refuse to provide repair services or provide paid repair services in the following situations:

- Unauthorized dismantling, such as changing wires, dismantling internal components, etc.
- No sales voucher or the content of the sales voucher does not match the product.

**Micsig** Shenzhen Micsig Technology Co., Ltd.

Tel: +86-755-88600880 Email: sales@micsig.com Web: www.micsig.com  
Add: 6F, Jinhuan Building, No. 56, Tiezai Rd, Bao'an District,  
Shenzhen, Guangdong, China.

# Quick Guide

## SigOFIT Optical-fiber Isolated Probe MOIP Series

### 1、Overview

Based on exclusive SigOFIT™ technology, the SigOFIT optical-fiber isolated probe has extremely high CMRR and isolation voltage, help to unveil the whole truth of the signal within bandwidth.



Scan to watch  
Basic Operation and Precautions

### WARNING

- \* DO NOT block the heat dissipation port on the back of Optical-Electrical converter, otherwise the probe may be overheated and damaged.
- \* DO NOT excessively bend the fiber cable. Avoid tight radius (< 8cm) bends, crushing, crimping, twisting, pulling or otherwise stressing the cable.
- \* When disassembling and moving the probe, please hold the converter body by hand, do not lift or drag the cable.

## 2. Characteristics

Model	MOIP100P	MOIP200P	MOIP350P	MOIP500P	MOIP800P	MOIP1000P
Bandwidth	100MHz	200MHz	350MHz	500MHz	800MHz	1GHz
Rise Time	≤ 3.5ns	≤ 1.75ns	≤ 1ns	≤ 700ps	≤ 438ps	≤ 350ps
CMRR	DC: 180dB 100MHz: 128dB	DC: 180dB 200MHz: 122dB	DC: 180dB 350MHz: 118dB	DC: 180dB 500MHz: 114dB	DC: 180dB 800MHz: 110dB	DC: 180dB 1GHz: 108dB
Differential Voltage Range	<b>Standard:</b> OP20(MMCX), ±25V  Optional: OP50(MMCX), ±62.5V OP200(MCX), ±250V OP1000(MCX), ±1250V OP2000(MCX), ±2500V OP5000(LCX), ±6250V	<b>Standard:</b> OP20(MMCX), ±25V OP1000(MCX), ±1250V  Optional: OP50(MMCX), ±62.5V OP200(MCX), ±250V OP2000(MCX), ±2500V OP5000(LCX), ±6250V	<b>Standard:</b> OP50(MMCX), ±25V OP2000(MCX), ±1000V  Optional: OP50(MMCX), ±10V OP100(MMCX), ±50V OP5000(MCX), ±2500V OP10000(LCX), ±5000V			
Noise	<0.45mVrms					
DC Gain Accuracy	1%					
Common Mode Voltage Range	85kVpk					
Power supply	DC 12V					
Interface	Universal BNC					

## 3. Adapters and coaxial lead

Accessory name	Withstand voltage range
MCX-adapter	< 3000Vpp
MMCX-adapter	< 300Vpp
MCX coaxial lead	< 3000Vpp
MMCX coaxial lead	< 300Vpp
LCX coaxial lead	< 8000Vpp

## 4. Button Descriptions

Cali. button:

Press to calibrate in 1 second, no need to disconnect circuit, one sound means success, three sounds mean failure.

Gain button:

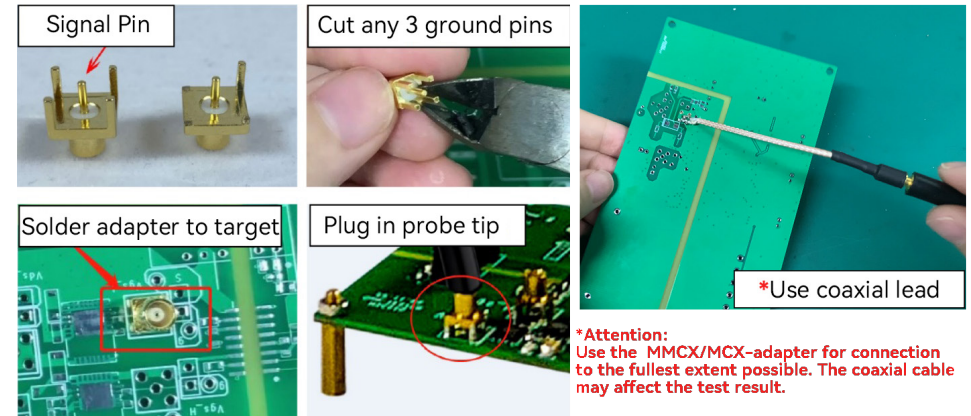
Press to switch between 0dB(1X) and 20dB(10mX). Select the appropriate gear according to the test range, which can effectively improve the signal-to-noise ratio. Please refer to the SigOFIT probe User Manual for the specific test range.

## 5. Main Steps

1. Solder the MMCX/MCX-adapter or coaxial lead to the test board

Notice:

- 1) When testing Vgs signal, the signal pin (in the middle) of the MMCX/MCX-adapter must be connected to the G-end of the MOSFET.
- 2) Solder the MMCX/MCX-adapter directly to the test point, try NOT to use extension lead, it may bring unsatisfactory test results.
- 3) For easy soldering, suggest to cut three of the four ground pins around the base, just keep one.
- 4) Under the condition permitting, try to use the MMCX/MCX-adapter as much as possible. The coaxial cable may affect the test result.



2. Connect the Optical-fiber Isolated Probe to oscilloscope.

3. Set the oscilloscope input impedance to 50Ω, set corresponding attenuation ratio and delay time on the oscilloscope.

4. Connect attenuating tip to the Electrical-Optical (E-O) converter.



5. Power the SigOFIT probe by connecting USB-C cable to O-E Converter using standard charger.

6. Plug in the attenuating tip to MMCX/MCX-adapter, when hearing a "click", it means that the connection is successful.

7. Power ON the test board.

8. Adjust the oscilloscope settings and proceed normal test.

\*In addition to the above instructions, Micsig also provides a rich variety of attenuator connection interfaces with the object under test, offering you multiple convenient and efficient measurement methods. Welcome to contact our sales or agents for consultation.